



ARCHDIOCESE OF BIRMINGHAM
CATHOLIC MULTI-ACADEMY
TRUST (CMAT)

Consultation Feedback

Thank you for taking part in the consultation exercise. The key points are summarised below:

Catholic Life: Will be the beating heart of the organisation with love and human dignity at the route of all decisions.

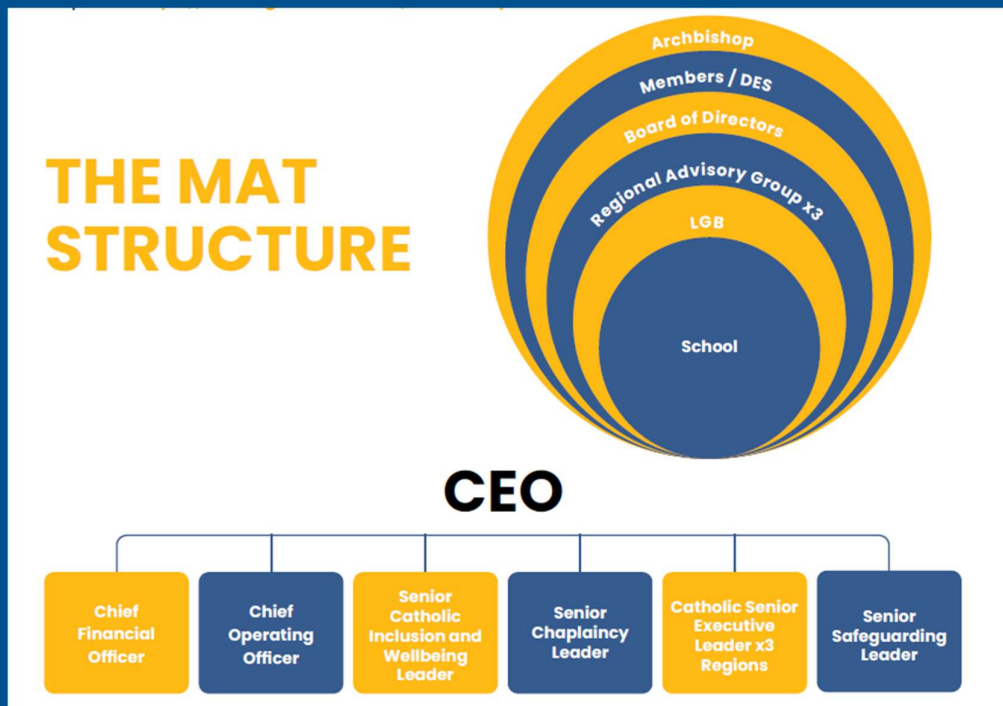
Curriculum: Broad, ambitious, well-sequenced and knowledge rich. Schools will learn from each other and work collaboratively to enrich the pupils' experiences.

Staff: Will have opportunities to work with, and learn from, each other. The easing of workload will be a priority.

School identity: Will not be lost. All schools will continue to have a Local Governing Body and there will also be a Regional Advisory Group.

Admissions: Will not change.





Costs: Will be kept low as the CMAT will be able to bulk buy leading to more money being spent on the pupils in the classroom and the buildings they are in.

SEND: Children with SEND will be a focus so they receive the support they deserve.

Pastoral Care: There will be Lay Chaplains who will provide additional support for children. They will also provide guidance for children on their journey of faith.

